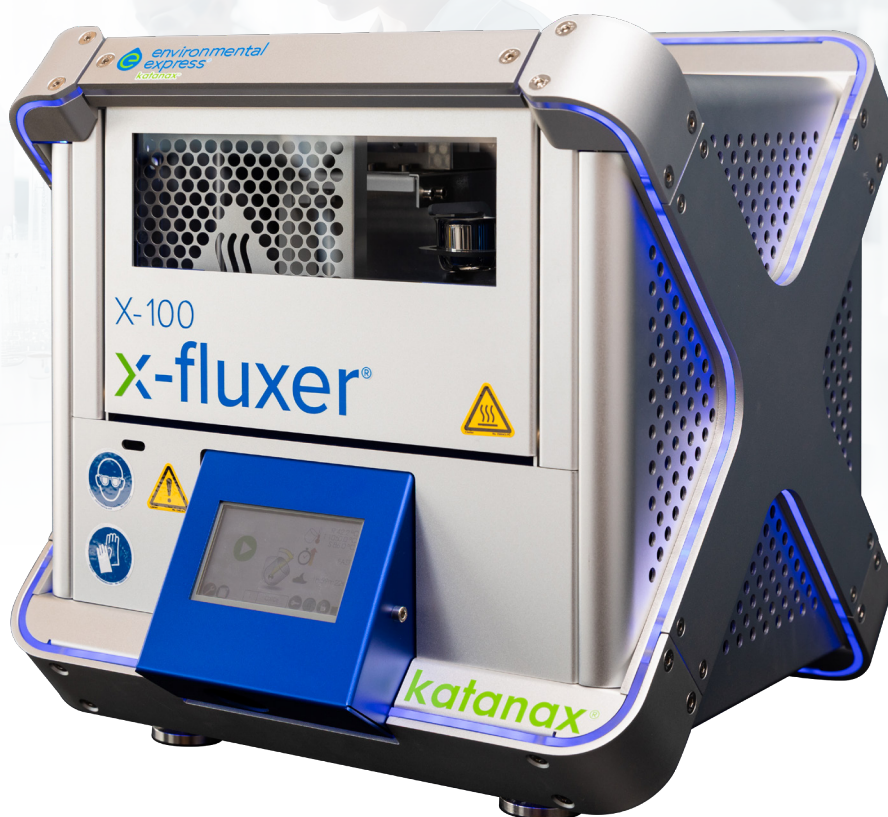


x-fluxer®

Single-Position Fluxer

Electric Fusion Fluxer for XRF and ICP Analysis



Sample Preparation for XRF and ICP Analysis



Soil



Alloys



Slag



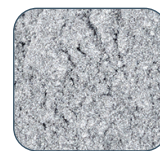
Minerals



Ceramics



Glass



Cement

Agence Nord:

ZA Object'Ifs Sud - Lot A3
6 Allée Emilie du Châtelet
14123 Ifs
tél : 02.31.34.50.74
fax : 02.31.34.55.17

Agence Sud:

Bât Le Venango. 392 Rue Jean Dausset
AGROPARC - BP11575
84916 Avignon Cédex 9
tél : 04.90.27.17.95 fax : 04.90.27.17.52



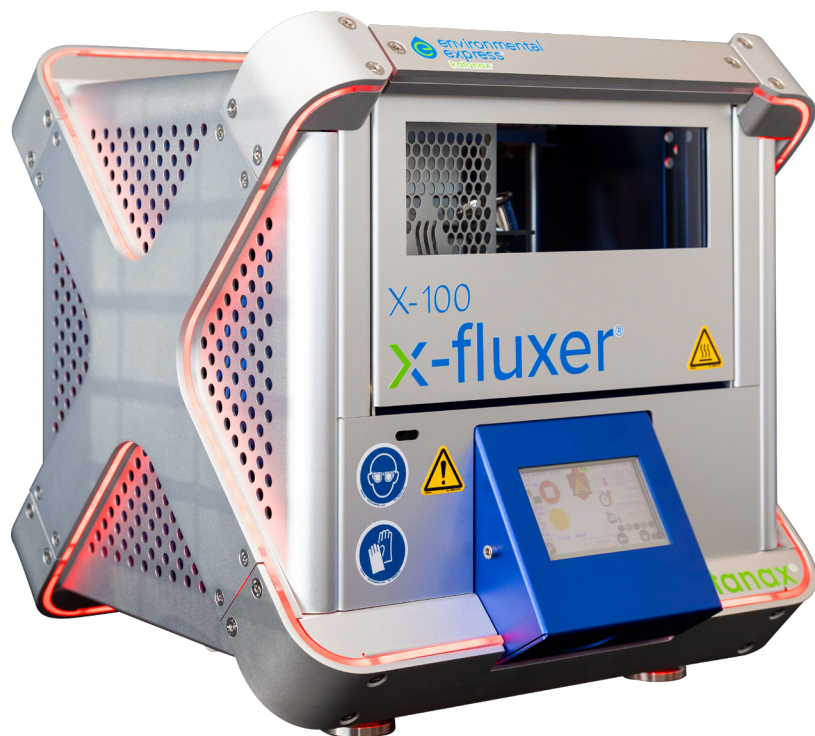
Agence Est:

Parc Club des Tanneries
2 Rue de la Faisanderie
67380 Lingolsheim
tél : 03.88.04.01.81
fax : 03.68.93.01.52

www.deltalabo.fr
info@deltalabo.fr

Introducing the most compact model in our X Series fluxers, designed specifically for entry-level laboratories

Embrace proven fusion technology with ease!

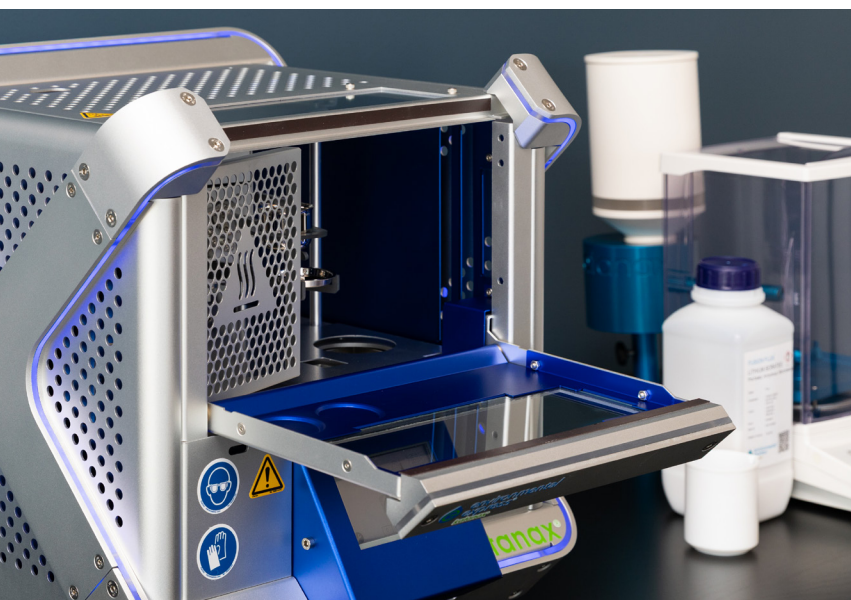


Benefits

- ① Electric Fusion Fluxer: unparalleled sample preparation versatility for XRF (beads) or ICP analysis (solution)
- ② Unmatched performance and technique reproducibility to our larger X Series fluxers
- ③ Independent self-contained operation with fully automated heating and sample processing
- ④ Limited footprint minimizes disruptions to existing lab processes and simplifies site setup requirements
- ⑤ User-Friendly Interface: Easily navigate operations with illuminated process indicators and an intuitive touch screen

Specifications

- Voltage: 115-230 VAC single phase
- Maximum Power: 1500 Watts
- Maximum temperature: 1200 °C
- Frequency: 50-60 Hz
- Fuses: 12 or 6A (Fast Blow)
- Weight: 22 kg (49 lbs)
- Height: 42 cm / 16.5 in
- Width: 42 cm / 16.5 in
- Depth: 42 cm / 16.5 in



Compact | Versatile | Easy Installation

X-100 Features

Cold-to-cold preparation

- Produces glass disks (fusion beads) for XRF analysis or dissolved metal solutions (including peroxide or pyrosulfate fusions without modification) for ICP-MS analysis

Productivity

- Featuring CPLive™ networking functions
- Innovative heating elements
- Impervious to flux and other chemical projections
- Robust and non-brittle (instrument can be moved without element damage)
- Cartridge type for easy replacement
- Can be changed individually, with minimal interruption

Advanced furnace

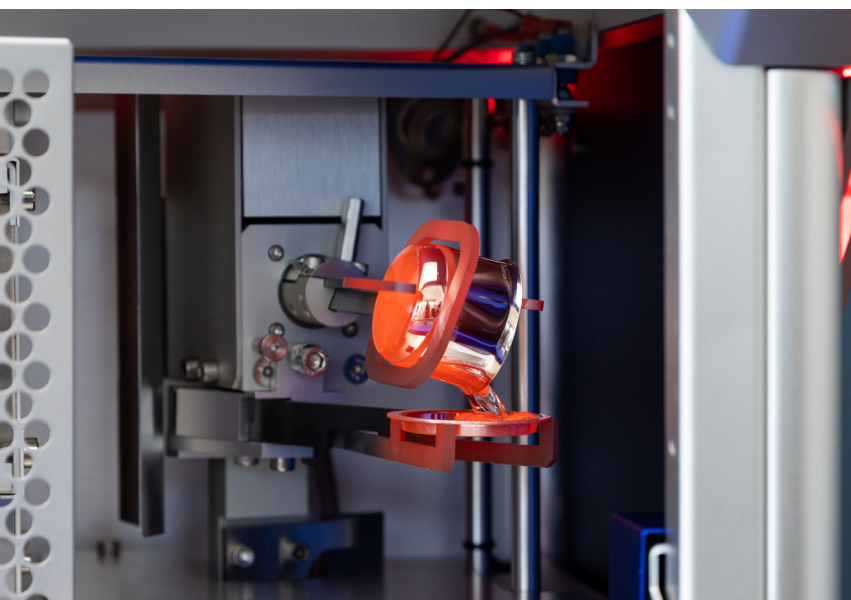
- PID temperature control to ensure stability, combined with a unique temperature calibration via molten flux
- Fast heat-up (<15 minutes)
- Strict use of ceramic eliminates metal contamination

Advanced movement control

- Movement recovery in case of stall
- All movement axis are driven directly
- Uses encoders as movement feedback (no sensor)

Additional details

- Industrial PLC interface (does not depend on Windows updates)
- Requires no external supplies (no power supply box, no cooling fluids)
- Works on 115 or 230 VAC single-phase power (no need for 3-phase)
- Ambient status light (red when processing, blue when completed)



Resilient | Automated | Safe

Method Development Program

Our free method development program allows you to send your samples to us and our application chemists will develop a fusion protocol for you. Contact us for more information.



Fusion Flux

Superior micro-bead and pre-fused. Available with or without integrated non-wetting agents (LiBr or Lil).



Platinumware

Platinum crucibles and molds are available in standard or reinforced varieties.

Service & Maintenance

The X-Fluxer units are designed to be operated with limited maintenance. Servicing these units is made simple with easy component access, backed up with support from our dedicated service team.

Scan the QR code to learn more about the X-100 electric fusion fluxer



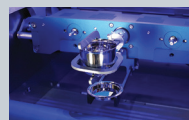
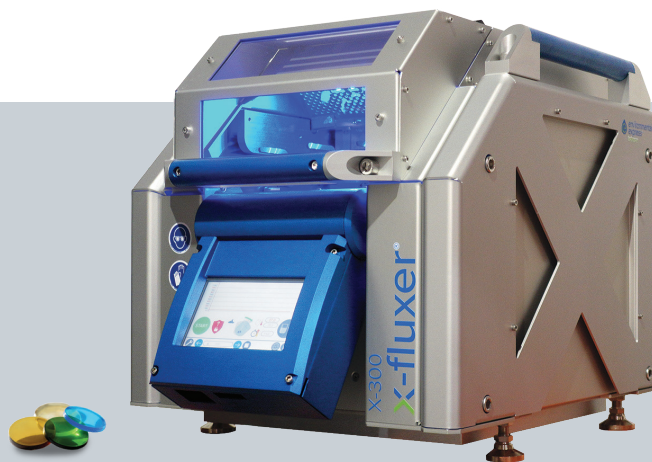
X-300

x-fluxer®

Scan the QR code to watch the X-300 informational video



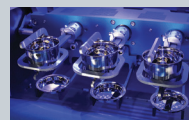
This automated, heavy-duty, electric fusion machine has a throughput of up to 15 samples per hour. The X-300 can be pre-configured to your needs and allows the user to expand the unit to two or three positions. Used to prepare glass disks (beads) for XRF, solutions for ICP/AA and peroxide or pyrosulfate fusions. It combines speed, simplicity and a robust design ideal for the experienced or novice user.



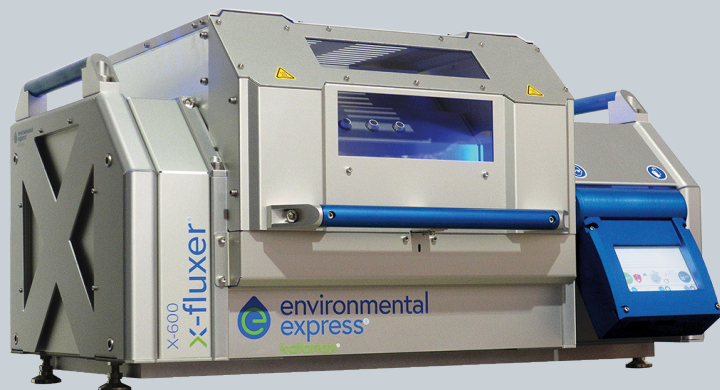
Single Position



Dual Position



Triple Position



X-600

x-fluxer®

Scan the QR code to watch the X-600 informational video



Built with the most demanding lab in mind, the Katanax X-600 Fluxer is the next generation in electric fusion offering enhanced features for unparalleled results. It is used to prepare glass disks (beads) for XRF analysis and solutions for ICP/AA analysis or for preparing peroxide and pyrosulfate fusions. This unit allows you to run up to six samples at the same time.

katanax.com
environmentalexpress.com

Canada: +1.418.915.4848
info@katanax.com
100-2500 Rue Jean-Perrin
Quebec, QC G2C 1X1 Canada

USA: +1.800.343.5319
sales@environmentalexpress.com
2345A Charleston Regional Pkwy
Charleston, SC 29492

Agence Nord:

ZA Object'ifs Sud - Lot A3
6 Allée Emilie du Châtelet
14123 Ifs
tél : 02.31.34.50.74
fax : 02.31.34.55.17

Agence Sud:

Bât Le Venango, 392 Rue Jean Dausset
AGROPARC - BP11575
84916 Avignon Cédex 9
tél : 04.90.27.17.95 fax : 04.90.27.17.52



Agence Est:

Parc Club des Tanneries
2 Rue de la Faisanderie
67380 Lingolsheim
tél : 03.88.04.01.81
fax : 03.68.93.01.52

www.deltalabo.fr
info@deltalabo.fr