

1.6 Software WinVisco 4

Software WinVisco 4 ...

Agence Nord:
ZA Object'ifs Sud - Lot A3
6 Allée Emilie du Châtelet
14123 Ifs
tél : 02.31.34.50.74
fax : 02.31.34.55.17



Agence Est:
Parc Club des Tanneries
2 Rue de la Faisanderie
67380 Lingolsheim
tél : 03.88.04.01.81
fax : 03.68.93.01.52

Agence Sud:
Bât Le Venango. 392 Rue Jean Dausset
AGROPARC - BP11575
84916 Avignon Cédex 9
tél : 04.90.27.17.95 fax : 04.90.27.17.52

www.deltalabo.fr
info@deltalabo.fr

..the new control software for AVS®370



Clearly separated: work area, main menu, menu bar and header



Individual Layout

The new WinVisco 4 is the ideal software to control the AVS®370, and it is included in the basic configuration of the instrument. Up to 8 viscometry measuring units (ViscoPumps) can be controlled by only few operating steps.

The WinVisco 4 is newly programmed - on the one hand combining clear representation of results, while on the other hand a comprehensive and detailed configuration of settings for the measuring method is possible.

As the previous version, the software is working in real multi-tasking operation, as WinVisco 4 is cooperating with the Visco-Pumps, whose internal software is controlling the time measurement and the measuring sequences.

Individual configuration of user interface

- Multi-Language: English, German, French, Spanish, Chinese
- Changeable Layout, e.g. graphics in white/black or black/silver.

Simple operation

The daily measuring routine is carried out in a simple manner, using two windows: "Start" and "Overview"

Temperature monitoring

New: With WinVisco 4, the bath temperature can be monitored when using a thermostat of the CT52 and CT72 series.

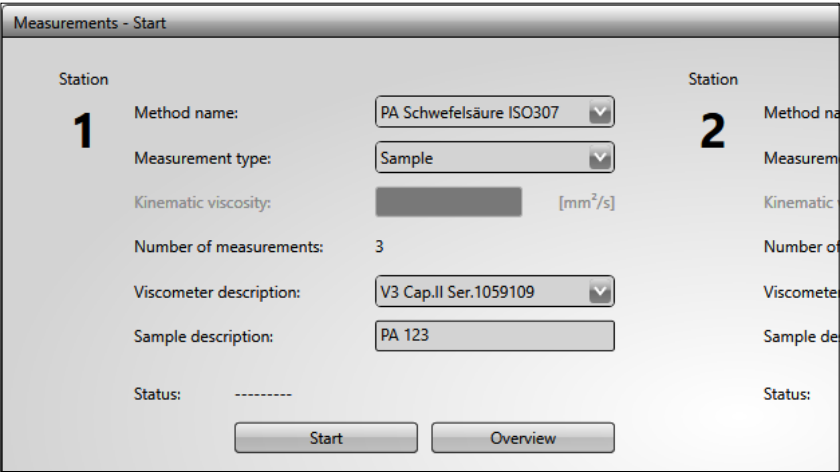
Clearly arranged

The requested results, e.g. the kinematic viscosity or viscosity number, can be shown in the overview.

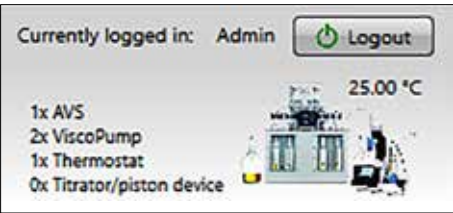
User management

The WinVisco 4 supports three different user types of users. In the lowest level, user, only operation is allowed. It includes the execution of measurements, but also the selection of methods and viscometers. In addition, the lab manager can change all settings: Configuration of the measuring position and method as well as the viscometer database.

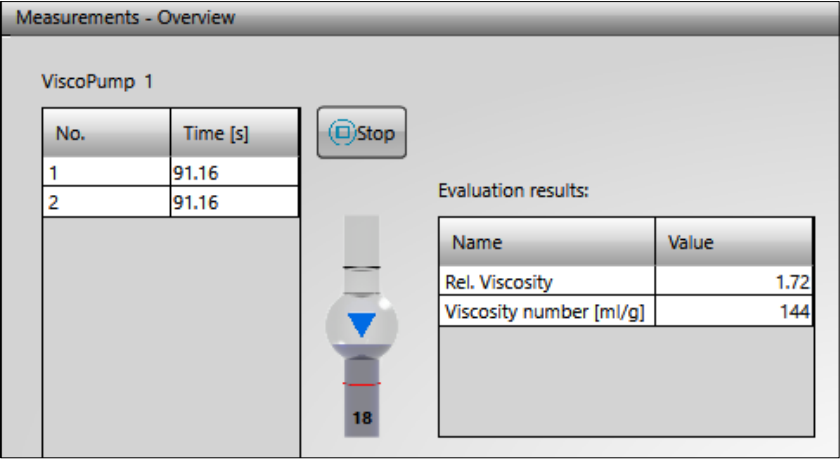
The administrator additionally can manage the user access data.



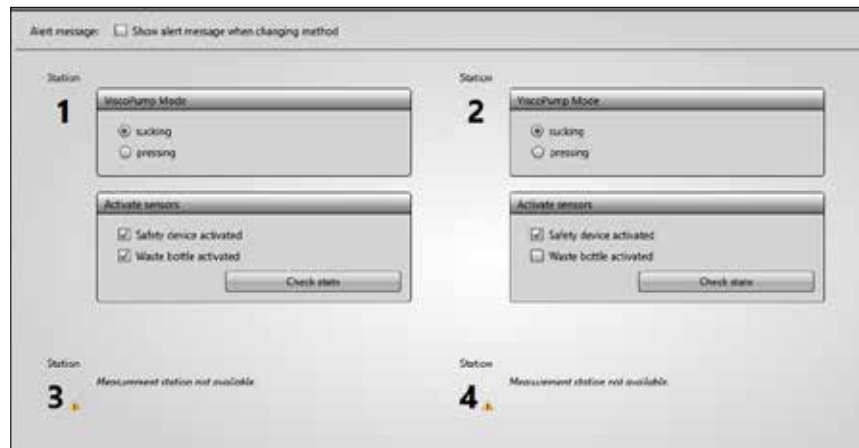
Sample input in window "Start"



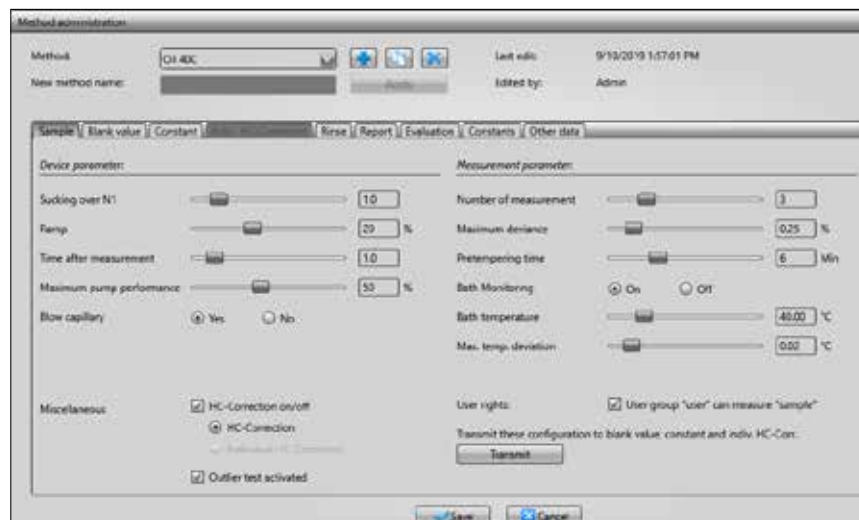
Everything under control



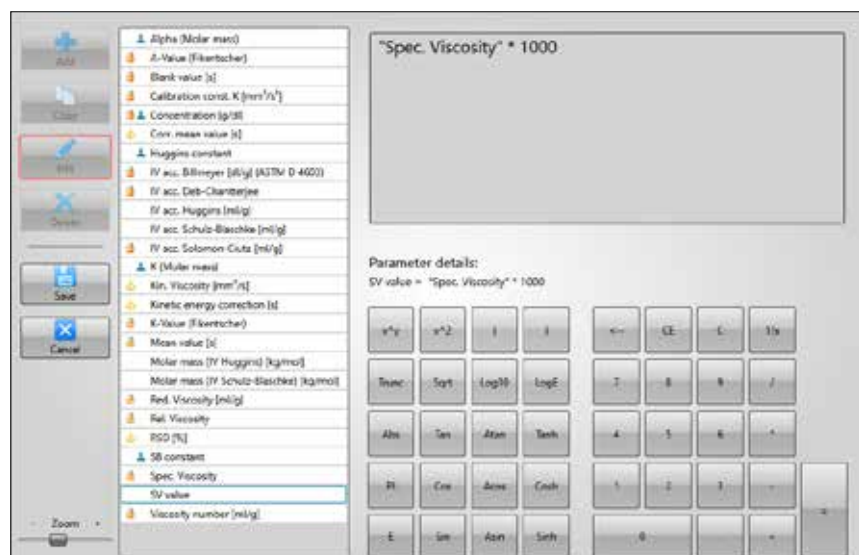
Overview of current measurements



Configuration



Method management



User-defined formula

Configuration of measurement station

For individual configuration of single measuring positions, e.g. "suction" or "pressure" mode, or activation of safety sensors.

Method

All measurement settings which valid for all positions are done in the method, e.g. parameters of the ViscoPump III and the measurement, the evaluation and the configuration of an optional rinsing sequence.

Rinsing

To rinse, there are two possibilities: rinsing with sample and rinsing with solvent. In both cases, the AVS® 370 is connected to a waste system, to enable rinsing of the viscometers keeping installed: With a build-in vacuum pump, samples and rinsing solvent are sucked into a waste bottle - the disassembling of viscometers for cleaning becomes obsolete.

The rinsing with sample is especially used in case of some polymer applications. Alternatively, rinsing with up to two solvents for each measuring position is possible.

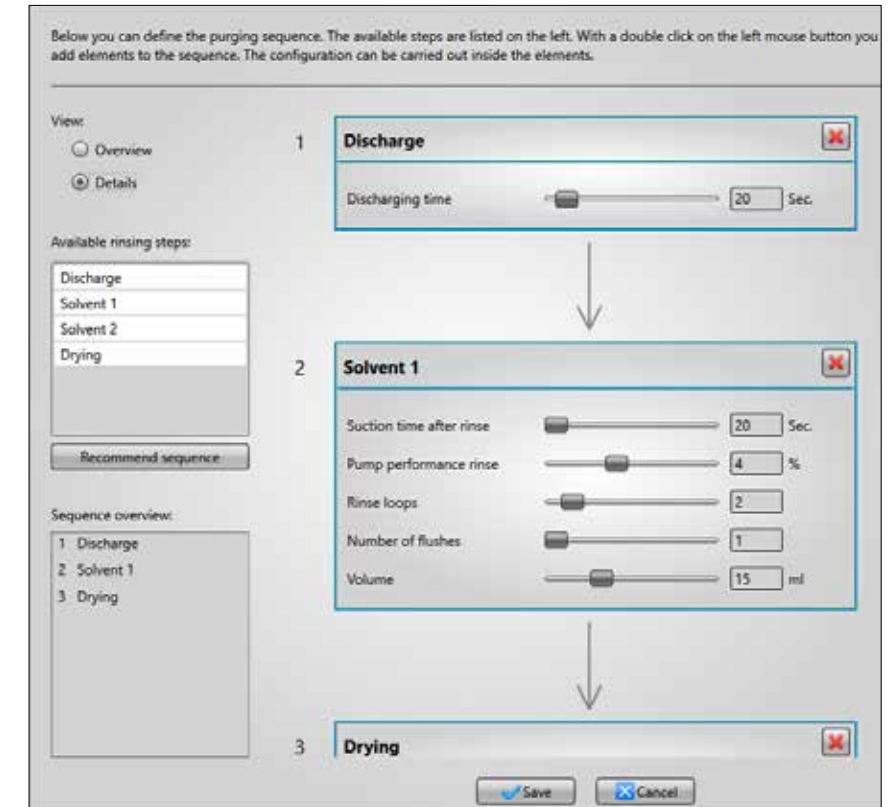
In case of solvent rinsing, a daisy chain connection enables the integration and control of additional burettes Titronic® 300 (or Titronic® 500) to the AVS® 370.

- ▶ The sequences for rinsing are individually configured in the software.

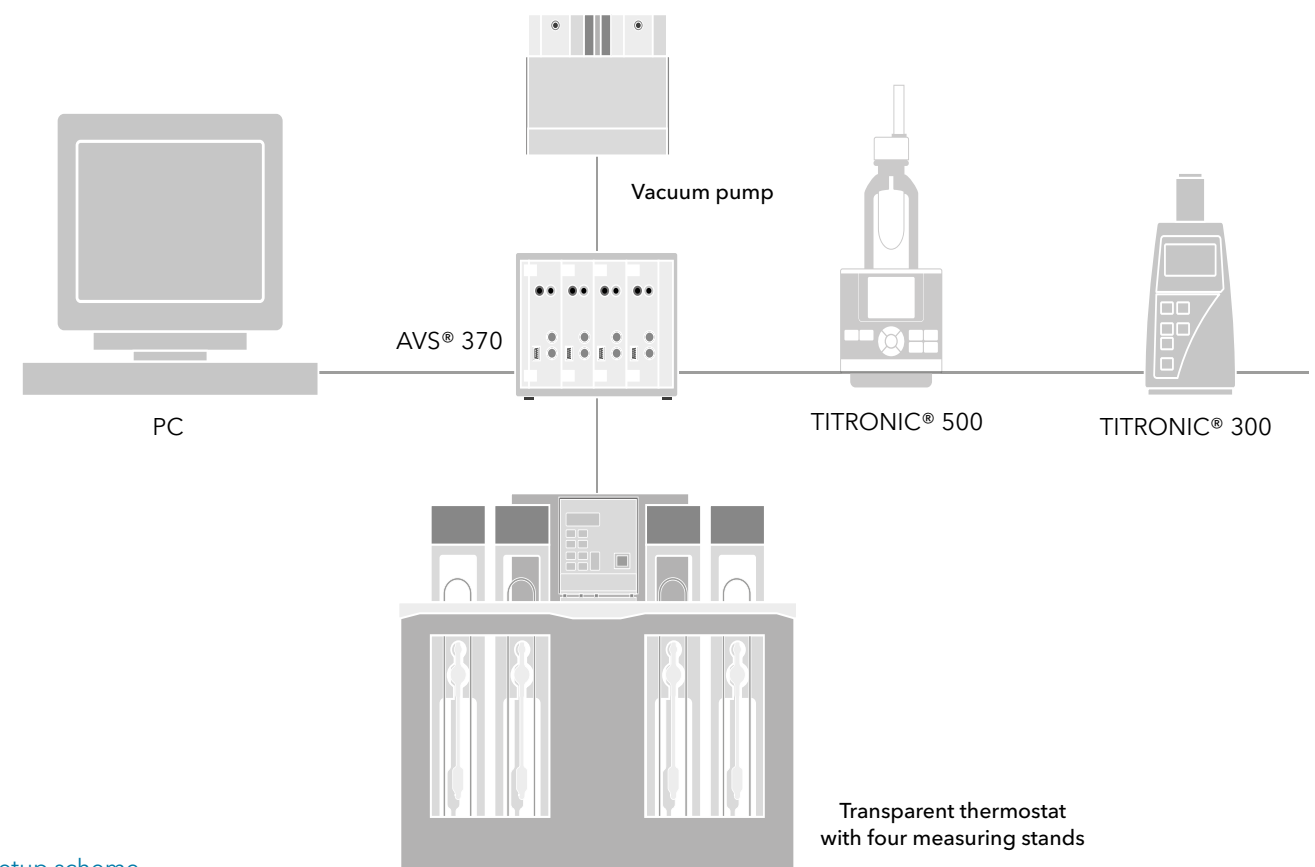
Evaluation

For evaluation, the WinVisco 4 includes many predefined formulas at state of delivery.

Additional calculations can be defined using a formel editor.



Clearly structured: Rinsing sequence



Setup scheme