

Protegra OF

Reverse osmosis systems 200 to 1000 l/h



Pure water for larger applications

Industries, laboratories, medical and analytical facilities – all need pure water in various qualities and quantities. The Protegra Open Frame series (OF) produces pure water for a wide range of applications. It naturally deionises water in an environmentally friendly way using the principle of reverse osmosis.

The Protegra OF series is designed to produce large quantities of demineralised water. The deionization rate is at least 98 per cent and conductivity of < 20 µS/cm are achieved depending on the salt content of the inlet water.

These systems can be combined with other Evoqua accessories, such as different tank sizes, pressure boosting systems and a Modbus TCP gateway as a communication interface to a building management center (BMS). This serves, for example, as the centrepiece of a central water treatment system in buildings with ring main operation.

Benefits

- Scope of supply includes consumables
- Compact service-friendly design, operable from all sides
- Applicable as central water treatment system
- Low maintenance
- Made in Germany

Typical applications

- Feed for laboratory ultrapure water systems
- General chemistry
- General industry
- Laboratory washing machines
- Water for autoclaves and environmental chambers
- Buffer preparation

Specifications

		Protegra OF 200	Protegra OF 500	Protegra OF 750	Protegra OF 1000
Flow rate	l/h	200	500	750	1000
Rejection rate min.	%	98	98	98	98
Recovery rate max.	%	75	75	75	75
Germ count reduction	%	> 99	> 99	> 99	> 99
Op. pressure max.	bar	14	14	14	14
Number of RO modules		1	3	4	5
Power supply	V/Hz	230 V/50/60 Hz	3 x 400/50	3 x 400/50	3 x 400/50
Power consumption	kW/h	0.55	1.33	1.8	2.2
Dimensions (H x W x D)	mm	1640 x 605 x 600	1640 x 605 x 600	1640 x 605 x 600	1640 x 605 x 600
Weight	kg	95	140	170	190
Catalog number		W3T269403	W3T314581	W3T314582	W3T314583

Systems < 1000 l/h on demand

Consumables

Cat. number	Description
W2T526933	Activated carbon/Fine filter cartridge ACB
W2T526551	Fine filter cartridge 5 µm Big Blue

Accessories

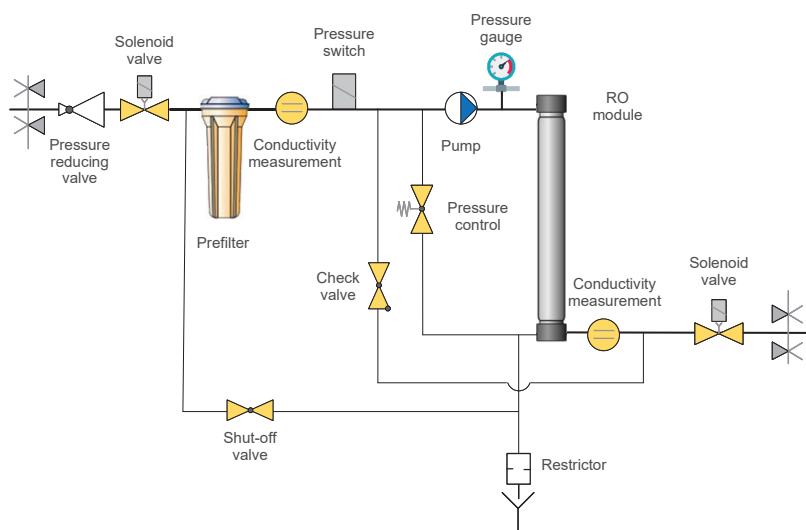
Cat. number	Description
W3T428768	Modbus TCP Gateway (LAB)
W3T262426	Degassing unit from 120 l/h on up to max. 5000 l/h

Testkits

Cat. number	Description
W2T870161	Testkit Carbon dioxide
W2T870160	Testkit Silica

Tanks

W3T197508	300 l, 650 x 1080 mm
W3T198133	500 l, 770 x 1230 mm
W3T198836	750 l, 720 x 720 x 1700 mm
W3T198753	1000 l, 780 x 780 x 1940 mm
W3T199591	1650 l, 2085 x 720 x 1400 mm
W3T199890	2000 l, 2180 x 720 x 1700 mm
W3T199834	3000 l, 2230 x 850 x 2200 mm



Agence Nord:

ZA Object'Ifs Sud - Lot A3
6 Allée Emilie du Châtelet
14123 Ifs
tél : 02.31.34.50.74
fax : 02.31.34.55.17



Agence Sud:

Bât Le Venango. 392 Rue Jean Dausset
AGROPARC - BP11575
84916 Avignon Cédex 9
tél : 04.90.27.17.95 fax : 04.90.27.17.52

Agence Est:

Parc Club des Tanneries
2 Rue de la Faisanderie
67380 Lingolsheim
tél : 03.88.04.01.81
fax : 03.68.93.01.52

www.deltalabo.fr
info@deltalabo.fr

xylem
Let's Solve Water