



Automatic Analysers: NewLab Range

NewLab 800 Low-temperature Torque

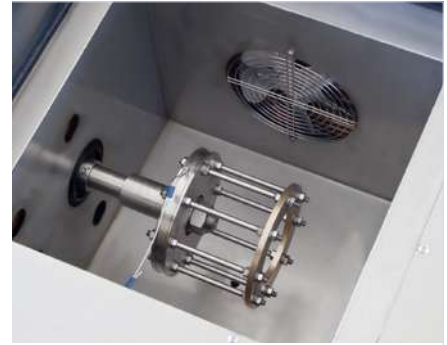
Agence Nord:
ZA Object'ifs Sud - Lot A3
6 Allée Emilie du Châtelet
14123 Ifs
tél : 02.31.34.50.74
fax : 02.31.34.55.17



Agence Est:
Parc Club des Tanneries
2 Rue de la Faisanderie
67380 Lingolsheim
tél : 03.88.04.01.81
fax : 03.68.93.01.52

Agence Sud:
Bât Le Venango, 392 Rue Jean Dausset
AGROPARC - BP11575
84916 Avignon Cédex 9
tél : 04.90.27.17.95 fax : 04.90.27.17.52

www.deltalabo.fr
info@deltalabo.fr



Newlab 800: Low-temperature Torque, testing chamber
Best raw materials and simplicity in construction, strong points that make it appreciated.

LINETRONIC TECHNOLOGIES

Linetronic Technologies SA
Via Onorio Longhi 2
CH-6864 Arzo, Mendrisio, Switzerland
tel. +41 91 6300703; fax +41 91 6300719
www.lin-tech.ch - info@lin-tech.ch



ASTM D1478
ASTM D4693

Subject

ASTM D1478: Low-temperature Torque of Ball Bearing Grease.

This test method covers the determination of the extent to which a grease retards the rotation of a slow-speed ball bearing by measuring starting and running torques at low temperatures, below -20°C (0°F).

ASTM D4693: Low-temperature Torque of Grease Lubricated Wheel Bearings.

This test method determines the extent to which a test grease retards the rotation of a specially-manufactured, spring-loaded, automotive-type wheel bearing assembly when subjected to low temperatures. Torque values, calculated from restraining-force determinations, are a measure of the viscous resistance of the grease. This test method was developed with greases giving torques of less than 35 N·m at 40°C.

Automatic Instrument for the Determination of Low-Temperature Torque of Greases

- Floor type instrument with steel structure painted with anti-epoxy products.
- Double stage refrigerating unit without CFC gases located in the bottom part of the structure - test cabin able to grant a working temperature of -73 °C.
- Internal double cabin made in stainless steel with high diffusion and homogeneity cooling system.
- Upper inspection door made in stainless steel with high insulation material.
- Geared motor, Ball-cage rotating at 1 rpm, digital dynamometer with easy connection system.
- Managed by a touch screen panel pc using Linetronic operating software running on Windows basis with following characteristic:
 - TFT/LCD 12";
 - 40 Gb HD;
 - 1024 × 768 resolution and 16 M colors;
 - 2 × USB ports;
 - Able to store more than 60'000 analysis.

Dimensions

- width 83 cm
- depth 75 cm
- height 142 cm

Weight

- 260 kg

Consumption

- 2500 Watt

Inrush Current

- 8000 Watt

Power Supply

- 220 Vac or 115 Vac 50/60Hz

Mandatory Accessories

- 16997: Mechanical mounting kit for performing analyzes according to ASTM D1478 standard including bearings for running tests.
- 16911: Mechanical mounting kit for performing analyzes according to ASTM D4693 standard including bearings for running tests.

Consumables

- 7056: ASTM D1478 Bearing LM11949/LM11910, pack of 3 pcs.
- 15765: ASTM D4693 tapered bearings, pack of 2 pcs.

Spare Parts

- 3800: Torque sensor ASTM D1478.
- 3799: Torque sensor ASTM D4693.
- 5804: Toothed belt.
- LAB-102-144: Torque wire.